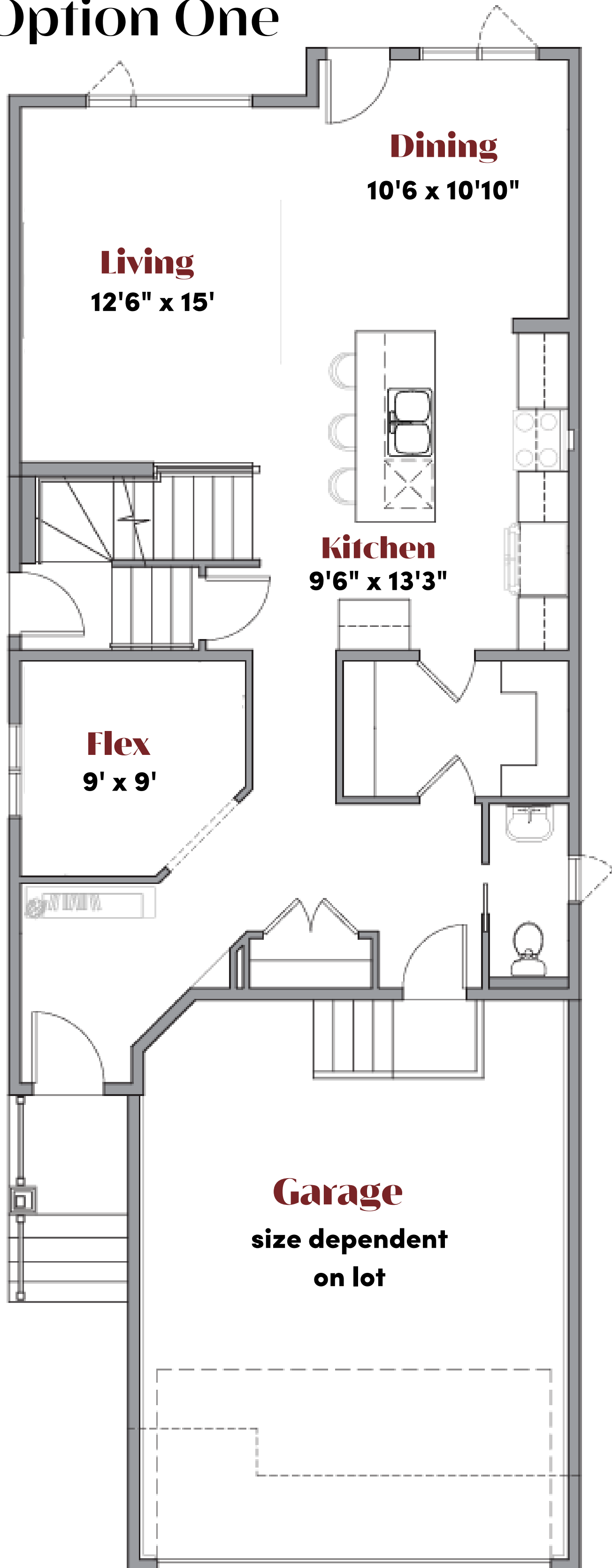


Winslow

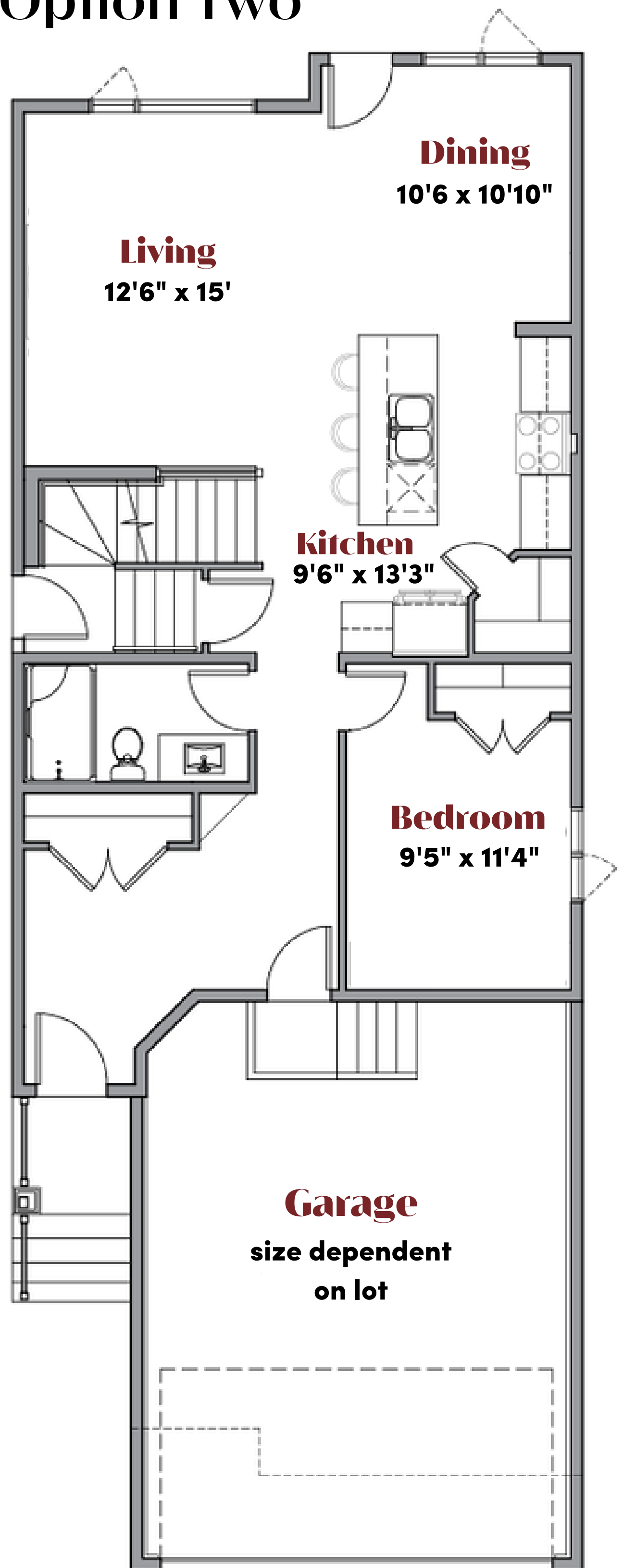
980 sqft + 1324 sqft = 2284 sqft
Main Floor + Second Floor



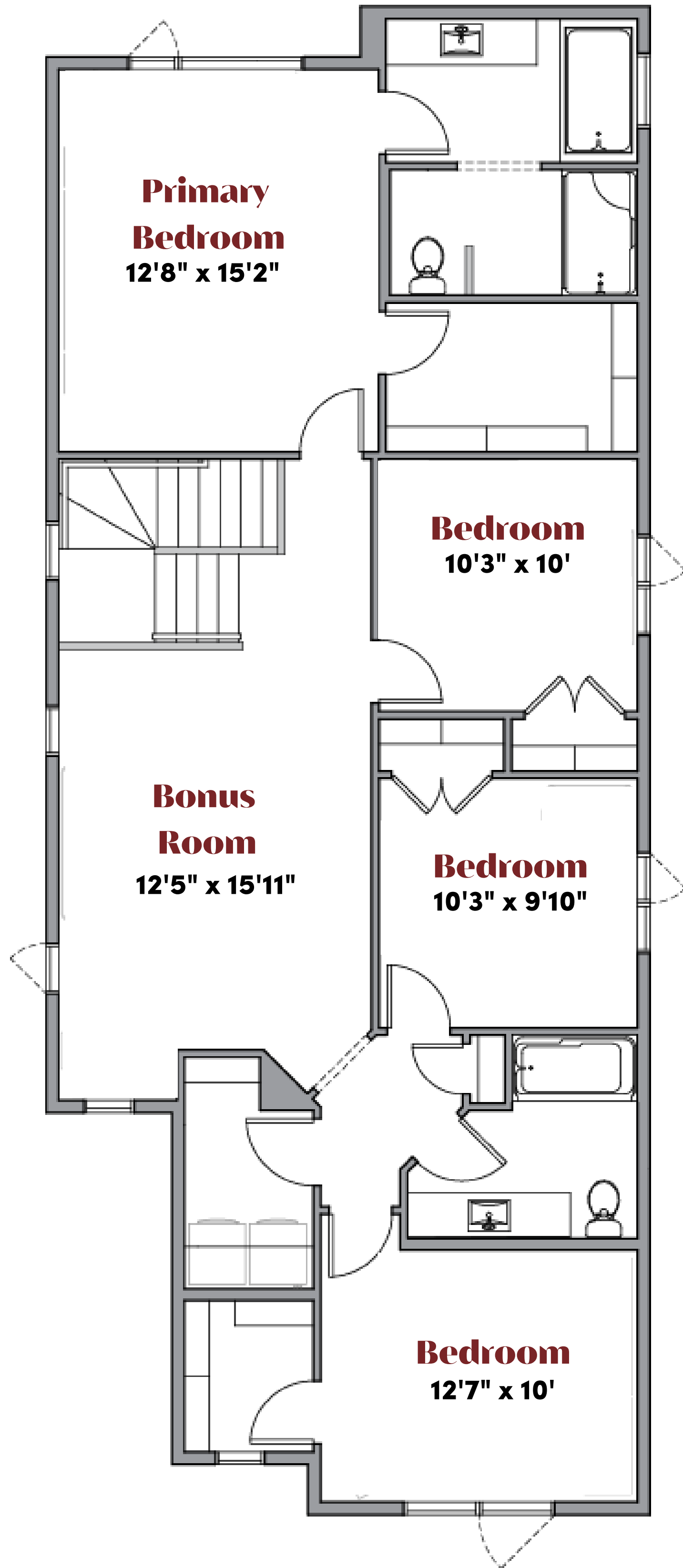
Option One



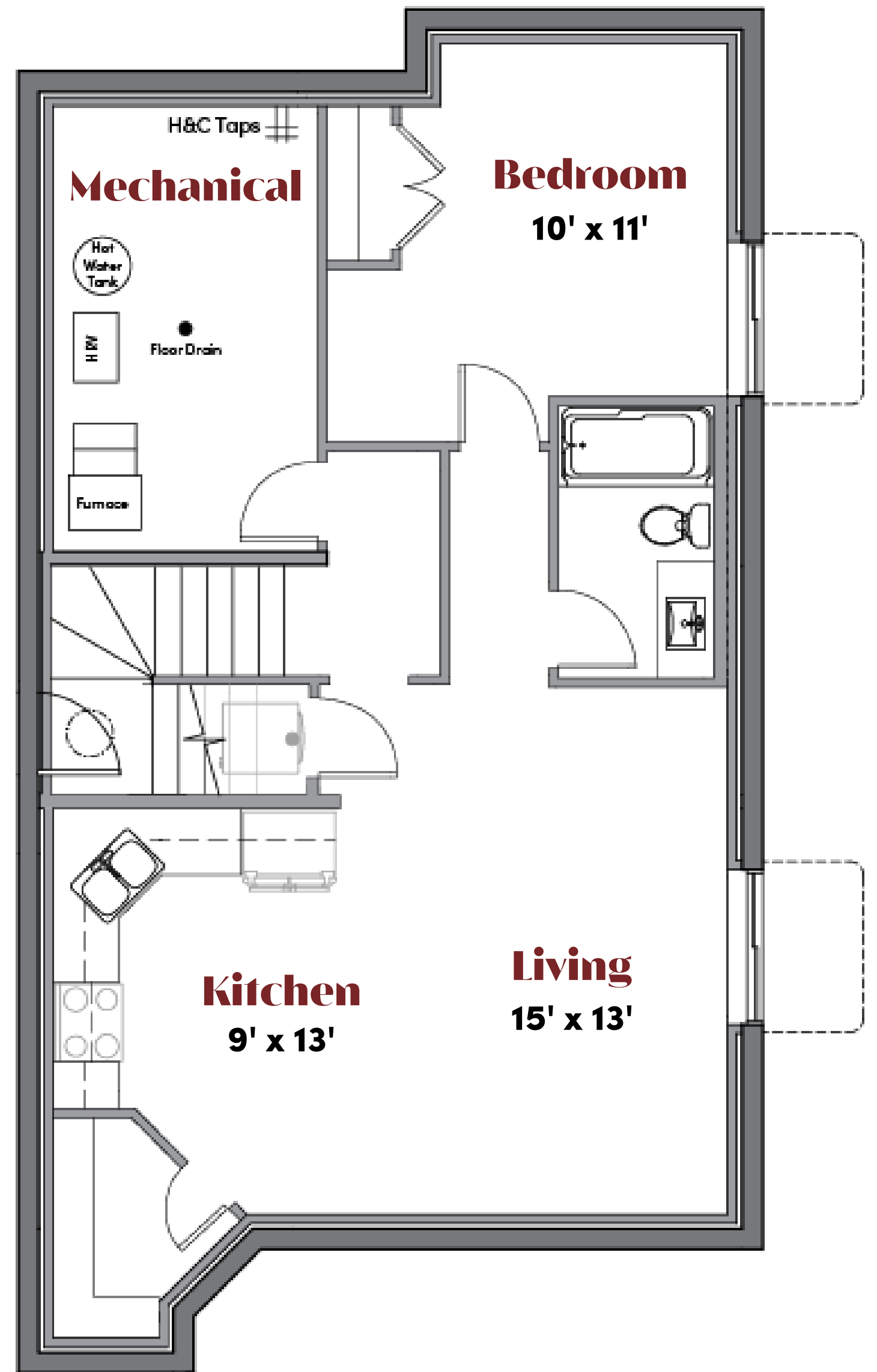
Option Two



Second Floor



Basement Suite (optional)



At 2284 sqft, the Winslow's large size offers families a lot of flexibility. With two amazing plans to choose from on the main floor, the open concept space allows your family to spend time together, while your choice of a flex room or additional bedroom provides privacy when needed.

Upstairs, over 1300 sqft provides your family with 4 bedrooms, including a generously sized primary bedroom with large ensuite and walk-in closet. Plus, an additional bathroom and laundry are conveniently located near the remaining three bedrooms. And don't forget about the bonus room - the perfect spot for a more casual family room, a playroom, or multipurpose space.

You also have the option to develop the basement in a variety of ways. Many homeowners like the versatility of developing a suite in the basement for extra rental income and the ability to use it a suite for family members later.