




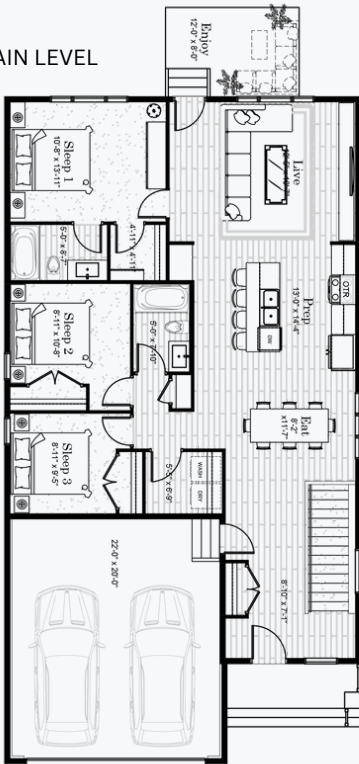
THE ELLIS

 1,381 SQFT
  3 BEDS
  2 BATHS

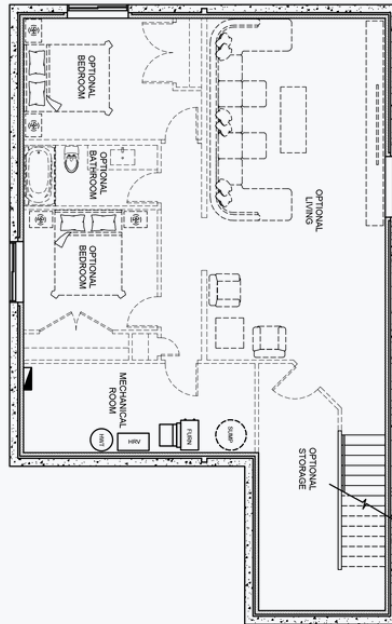


THE BUNGALOWS AT HARBOUR LANDING

MAIN LEVEL



OPTIONAL LOWER LEVEL



\$489,900 INCL. GST & PST

#40 - 5601 Parliament Ave.

Interior Design Package: The Beach

Exterior Colour: Coffee Bean

Features

- Bungalow Style Condominium
- Pet-Friendly Community
- Attached Double Garage
- Fully Landscaped & Maintained Yard
- Full Basement w/ Optional Development
- 1-2-5-10 New Home Warranty Protection



Kelsey Julé-Garbutt & Matt Danyluk
 info@pacesetterhomes.com
 306-994-7610

thebungalowsregina.ca





**THE
BUNGALOWS**
AT HARBOUR LANDING

BEACH



- ▶ Superior Cabinets (MDF) | Terrace Style Doors in 'Smooth Willow Grey'
- ▶ Kitchen Island Cabinets | Terrace Style Doors in 'Oyster Bay'
- ▶ Quartz Countertops Throughout in 'White Rock'
- ▶ Brushed Nickel Hardware & Plumbing Fixtures
- ▶ Lighting Package - Lexi Collection
- ▶ Kitchen Backsplash - Ames Tile in 'Mist' (3" x 16" glossy) with Mapei 'Frost' grout
- ▶ Bathroom Tub Tile/Shower - Cerasec in 'Bianco' (4" x 16" glossy) with Mapei 'Avalanche' grout
- ▶ Torly's Waterproof Laminate Plank in 'Hawthorne Oak'
- ▶ Carpet on Stairs & Bedrooms: Shaw Carpet | Heron Cove Series in 'Desert Light'
- ▶ Dulux Eggshell Paint in 'Pacific Pearl'