


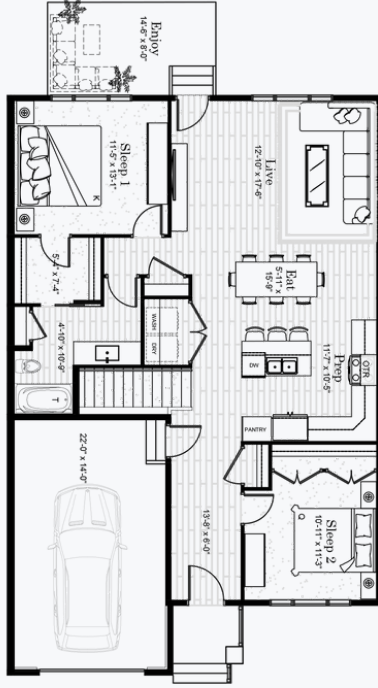


THE CAMPBELL

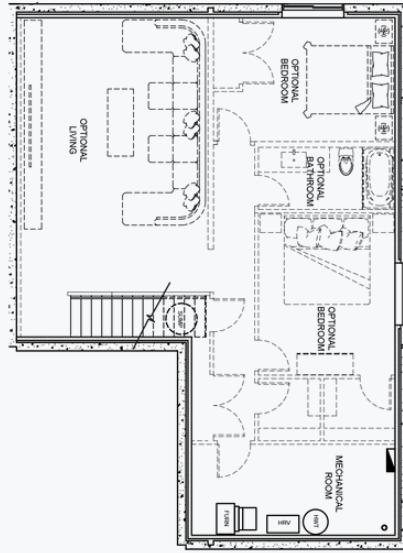
 1,195 SQFT
  2 BEDS
  1 BATH


THE BUNGALOWS
 AT HARBOUR LANDING

MAIN LEVEL



OPTIONAL LOWER LEVEL



\$446,900 INCL. GST & PST

#36 - 5601 Parliament Ave.

Interior Design Package: The Dusk

Exterior Colour: Gunmetal Grey

Features

- Bungalow Style Condominium
- Pet-Friendly Community
- Attached Single Garage
- Fully Landscaped & Maintained Yard
- Full Basement w/ Optional Development
- 1-2-5-10 New Home Warranty Protection



Kelsey Julé-Garbutt & Matt Danyluk
 infosk@pacesetterhomes.com
 306-994-7610

thebungalowsregina.ca





**THE
BUNGALOWS**
AT HARBOUR LANDING

DUSK



- ▶ Superior Cabinets (MDF) | London Style Doors in 'Smooth Cobblestone'
- ▶ Kitchen Island Cabinets | London Style Doors in 'Dusk'
- ▶ Quartz Countertops Throughout in 'Fusion'
- ▶ Chrome/Brushed Nickel Hardware & Plumbing Fixtures
- ▶ Lighting Package - Lexi Collection
- ▶ Kitchen Backsplash - Ames Tile in 'Marlow' (3" x 16" glossy) with Mapei 'Straw' grout
- ▶ Bathroom Tub/Tile/Shower - Ceratec in 'Bianco' (4" x 16" glossy) with Mapei 'Avalanche' grout
- ▶ Torly's Waterproof Laminate Plank in 'Laurel Oak'
- ▶ Carpet on Stairs & Bedrooms: Shaw Carpet | Heron Cove Series in 'Desert Light'
- ▶ Dulux Eggshell Wall Paint in 'Pacific Pearl'