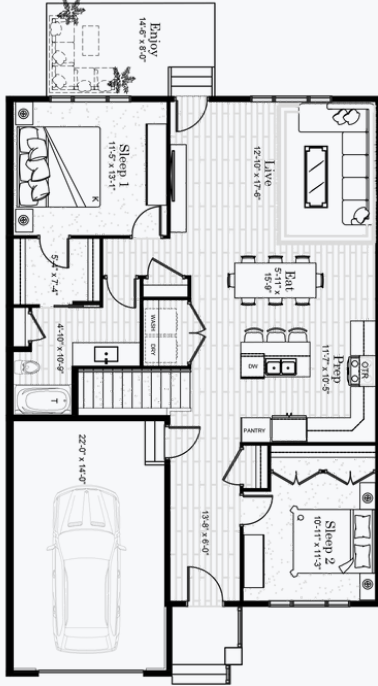


# THE CAMPBELL

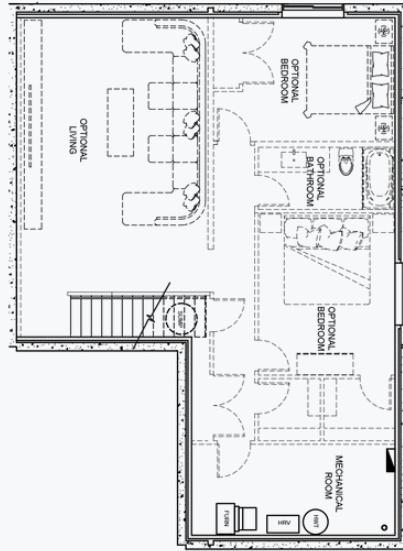
🏠 1,195 SQFT 🛏️ 2 BEDS 🚿 1 BATH

**THE BUNGALOWS**  
AT HARBOUR LANDING

MAIN LEVEL



OPTIONAL LOWER LEVEL



**\$446,900** INCL. GST & PST

**#35 - 5601 Parliament Ave.**

**Interior Design Package:** The Whisper

**Exterior Colour:** Gunmetal Grey

## Features

- Bungalow Style Condominium
- Pet-Friendly Community
- Attached Single Garage
- Fully Landscaped & Maintained Yard
- Full Basement w/ Optional Development
- 1-2-5-10 New Home Warranty Protection



**Kelsey Julé-Garbutt & Matt Danyluk**  
infosk@pacesetterhomes.com  
306-994-7610

[thebungalowsregina.ca](http://thebungalowsregina.ca)



# WHISPER



- ▶ Superior Cabinets (MDF) | Detroit Style Doors in 'Smooth White'
- ▶ Kitchen Island Cabinets | Detroit Style Doors in 'Smooth White'
- ▶ Quartz Countertops in 'Frozen Tundra (BS)'
- ▶ Black Hardware and Plumbing Fixtures
- ▶ Lighting Package - Jaco Collection
- ▶ Kitchen Backsplash - Ames Tile in 'Cloud' (3" x 16" glossy) with Mapei 'Avalanche' Grout
- ▶ Bathroom Tub Tile/Shower - Cerasec in 'Bianco' (4" x 16" glossy) with Mapei 'Avalanche' Grout
- ▶ Torly's Waterproof Laminate Plank in 'Venice Oak Grey'
- ▶ Carpet on Stairs & Bedrooms: Shaw Carpet | Heron Cove Series in 'Soft Fleece'
- ▶ Dulux Eggshell Paint in 'Pacific Pearl'