

## Home Features

Bedroom: 3

Bathroom: 2.5

Main Floor: 790 SQ. FT.

Upper Floor: 790 SQ. FT.

Total: 1580 SQ. FT.

# THE BRADDOCK

## ELEVATIONS

Elevation P1 - Concept Only



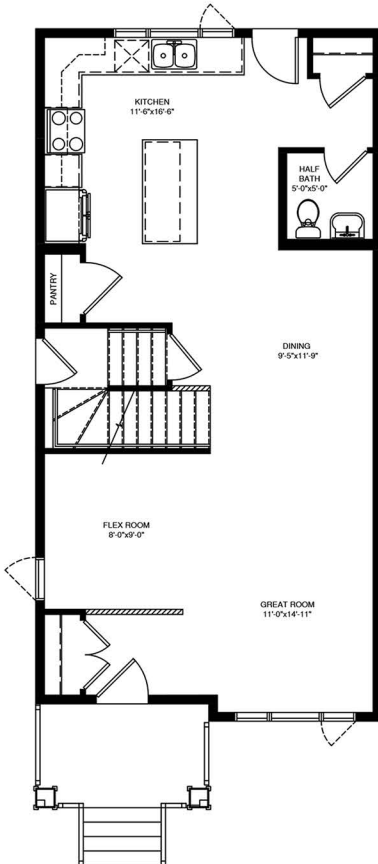
Elevation P1: Concept Only



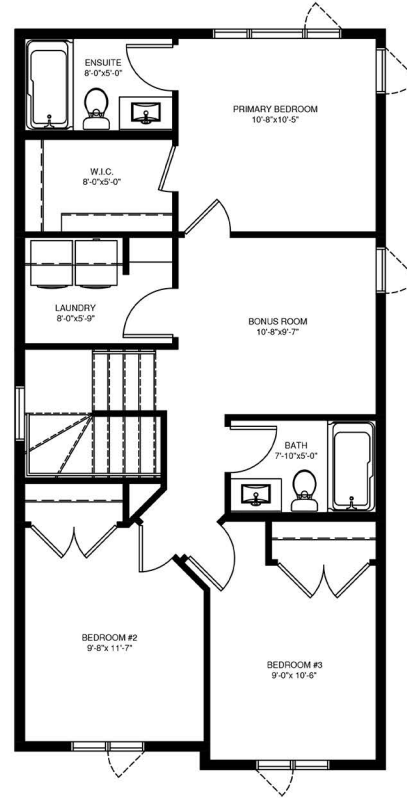
# THE BRADDOCK

## Home Features

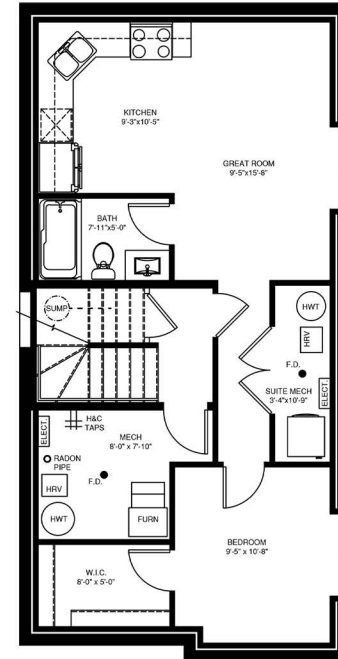
- Stylish Laned Home
- Spacious Open Concept Main Floor
- L-Shaped Kitchen with a Generously Sized Island
- Versatile Flex Room on Main Floor
- Side Entrance
- Second Floor Bonus Room
- Primary Bedroom with Private Ensuite and Walk-in-Closet
- Second Floor Laundry Room



**MAIN FLOOR PLAN**  
790 SQ. FT.



**SECOND FLOOR PLAN**  
790 SQ. FT.



**OPTIONAL BASEMENT DEVELOPMENT**