



**PACESETTER
HOMES**

A QUALICO[®] Company

THE GAIT-ASCOT

- **Bedroom: 3**
- **Bathroom: 2.5**

Main Floor: 664 SQ.FT.

Upper Floor: 664 SQ.FT.

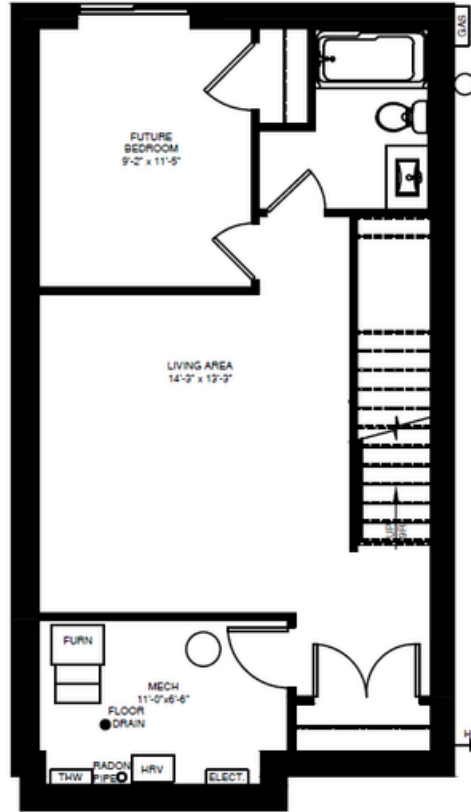
Total: 1328 SQ.FT.



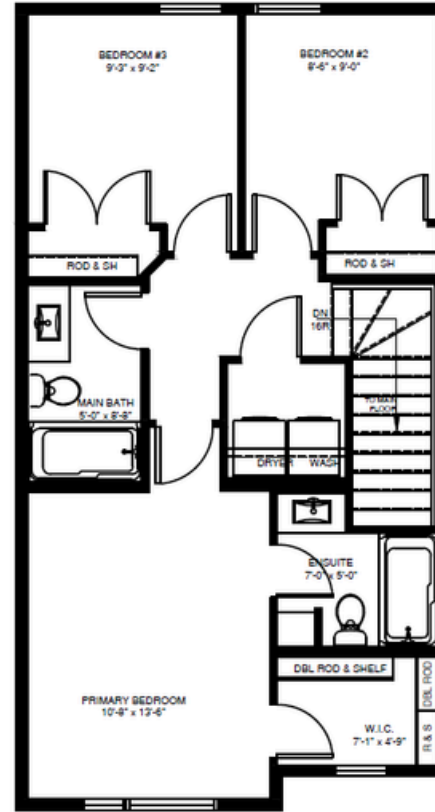
THE GAIT-ASCOT

Home Features:

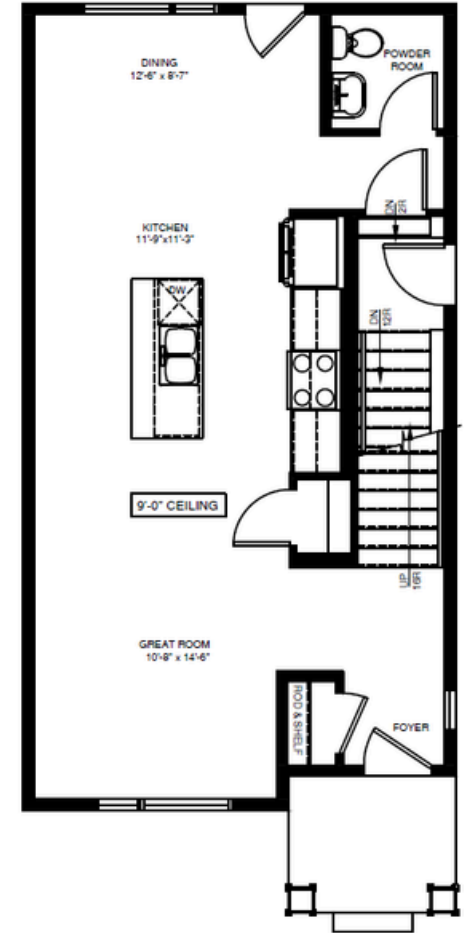
- Town Home
- Open Concept Layout
- Galley Kitchen
- 9' ceilings on main floor for an open, airy feel
- Front & side landscaping
- Primary Bedroom with Private Ensuite and Walk-in-Closet
- Second Floor Laundry Room



BASEMENT DEVELOPMENT PLAN
DEVELOPMENT FLOOR AREA: 417 SQ. FT.



ASCOT - 2ND FLOOR PLAN
MAIN FLOOR AREA: 664 SQ. FT.
2ND FLOOR AREA: 664 SQ. FT.
TOTAL FLOOR AREA: 1328 SQ. FT.



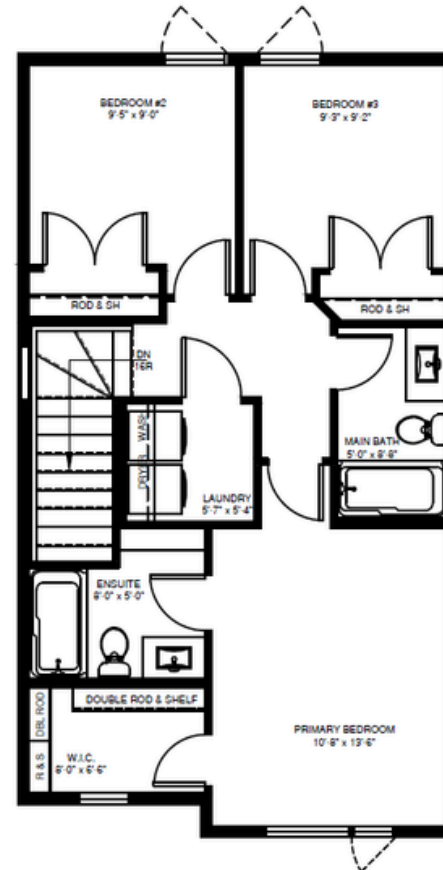
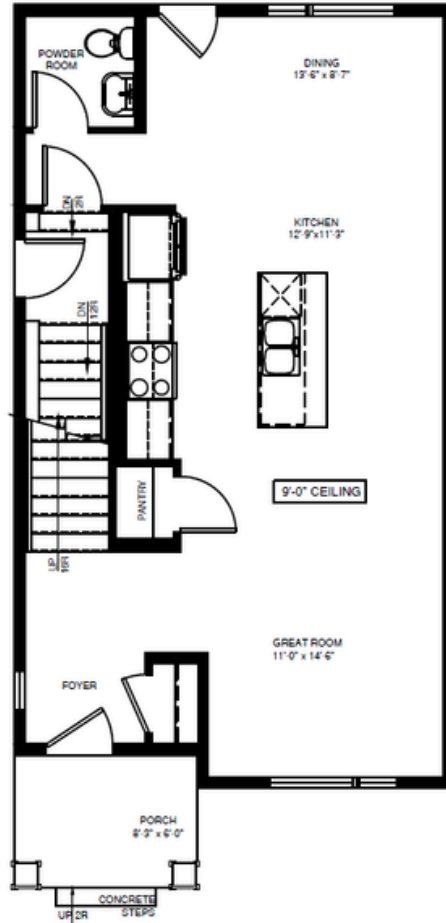
ASCOT: 1328 sq. ft.
UNITS: 19, 35, 51, 67

Disclaimer:
The above drawing is a graphical representation of the unit to be built. Site conditions may dictate changes or substitutions that have to be made and are not reflected on these drawings. Pacesetter Homes reserves the right to make such changes or substitutions as they see fit. Do not scale drawings; confirm dimensions on site.

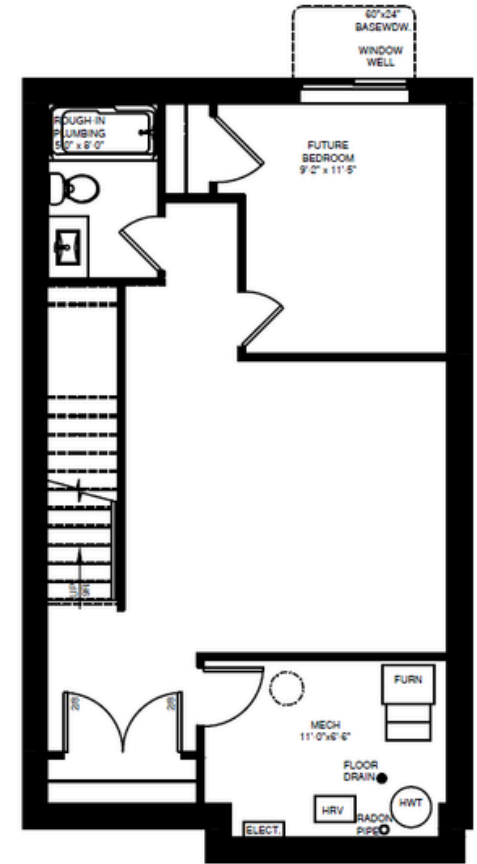
THE GAIT-ASCOT

Home Features:

- Town Home
- Open Concept Layout
- Galley Kitchen
- 9' ceilings on main floor for an open, airy feel
- Front & side landscaping
- Primary Bedroom with Private Ensuite and Walk-in-Closet
- Second Floor Laundry Room



WINDSOR
MAIN FLOOR AREA: 696 SQ. FT.
2ND FLOOR AREA: 696 SQ. FT.
TOTAL FLOOR AREA: 1392 SQ. FT.



BASEMENT DEVELOPMENT PLAN
DEVELOPMENT FLOOR AREA: 440 SQ. FT.

ASCOT: 1328 sq. ft.
UNITS: 31, 47, 63

Disclaimer:
The above drawing is a graphical representation of the unit to be built. Site conditions may dictate changes or substitutions that have to be made and are not reflected on these drawings. Pacesetter Homes reserves the right to make such changes or substitutions as they see fit. Do not scale drawings; confirm dimensions on site.