



**PACESETTER
HOMES**
A QUALICO[®] Company

WINDSOR

- **Bedroom: 3**
 - **Bathroom: 2.5**
-

Main Floor: 696 SQ.FT.

Upper Floor: 696 SQ.FT.

Total: 1392 SQ.FT.

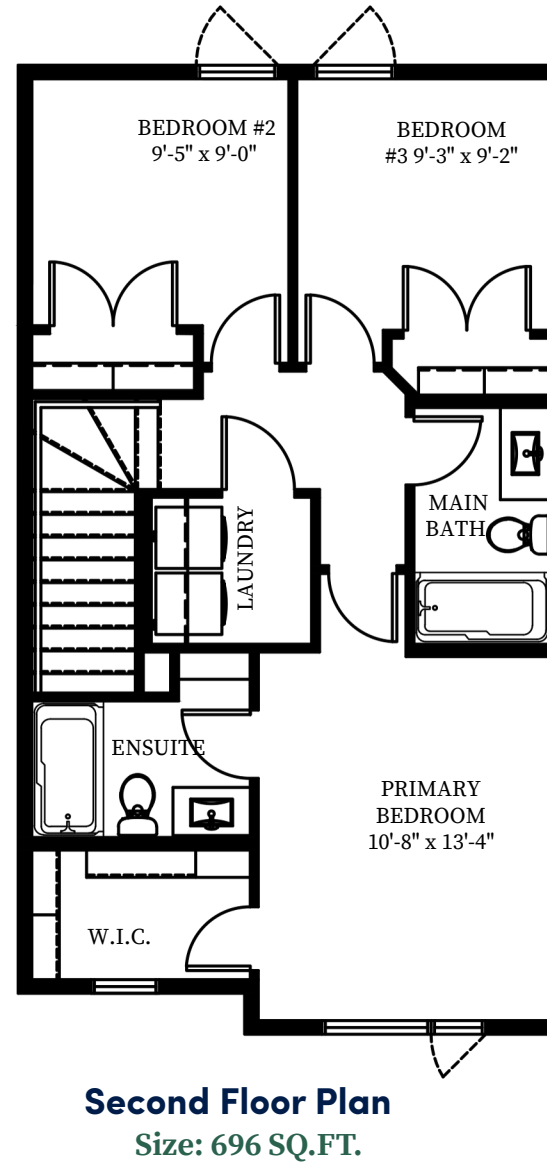
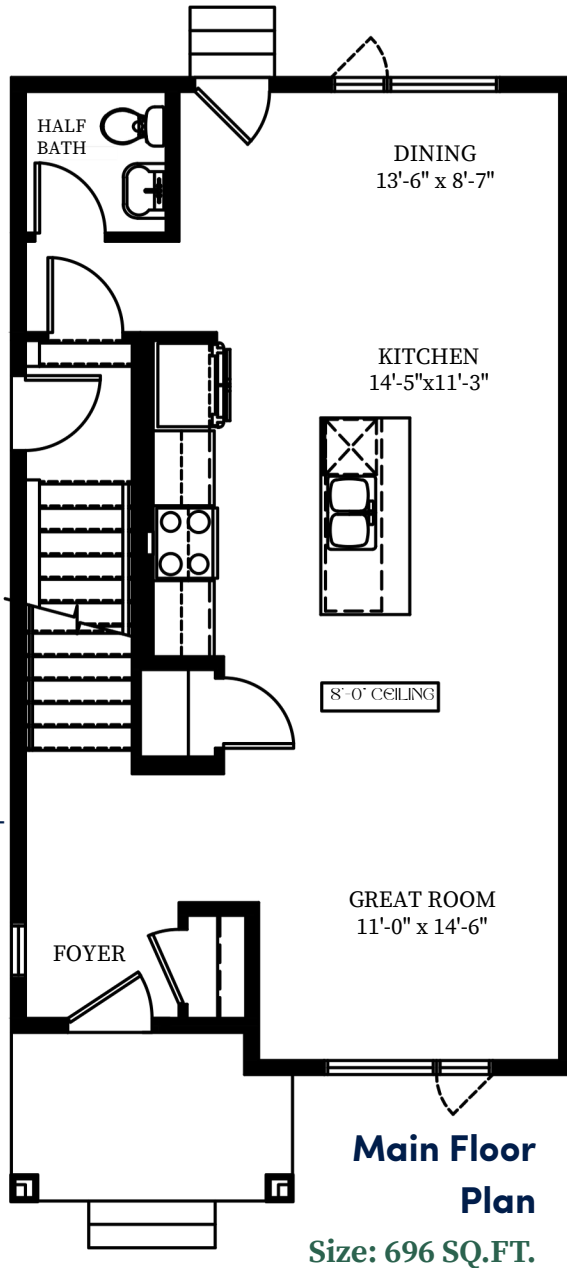


WINDSOR

Home Features:

- Town Home
- Open Concept Layout
- Galley Kitchen
- 8' ceilings on main floor for an open, airy feel
- Front & side landscaping
- Primary Bedroom with Private Ensuite and Walk-in-Closet
- Second Floor Laundry Room

Disclaimer:
The above drawing is a graphical representation of the unit to be built. Site conditions may dictate changes or substitutions that have to be made and are not reflected on these drawings. Pacesetter Homes reserves the right to make such changes or substitutions as they see fit. Do not scale drawings; confirm dimensions on site.



Optional Basement Plan

Size: 407 SQ.FT.

