



**PACESETTER
HOMES**

A QUALICO[®] Company

THE GAIT-CHESTER

- **Bedroom: 3**
- **Bathroom: 2.5**

Main Floor: 692 SQ.FT.

Upper Floor: 692 SQ.FT.

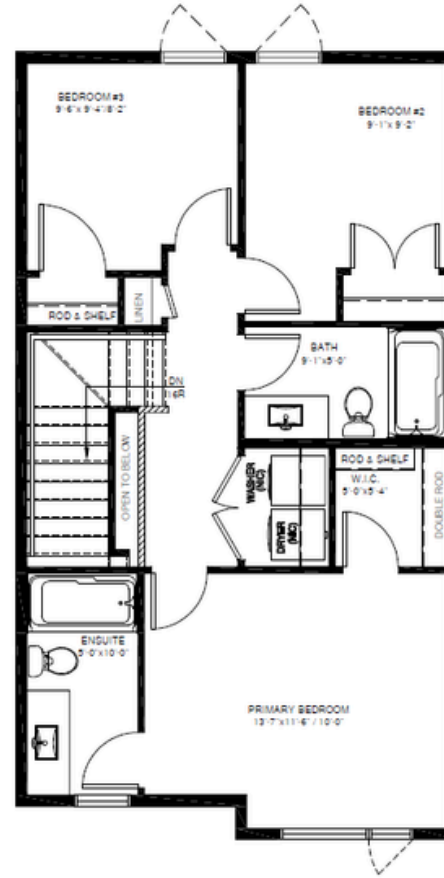
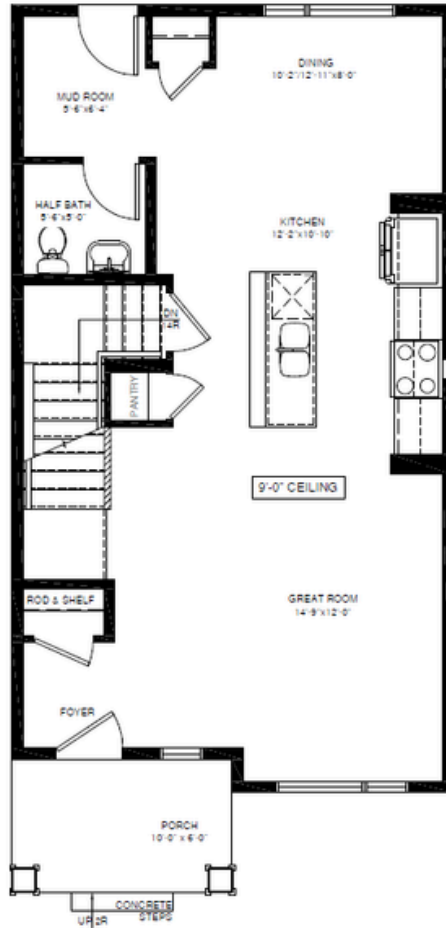
Total: 1384 SQ.FT.



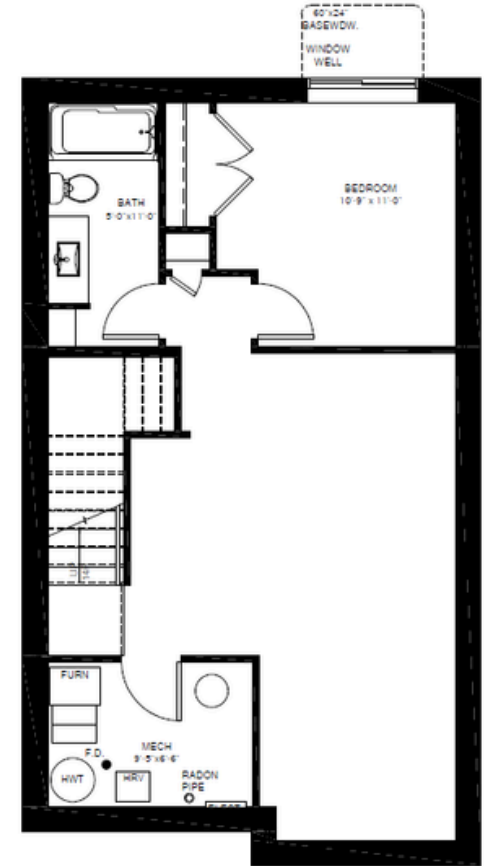
THE GAIT-CHESTER

Home Features:

- Town Home
- Open Concept Layout
- Galley Kitchen
- 9' ceilings on main floor for an open, airy feel
- Front & side landscaping
- Primary Bedroom with Private Ensuite and Walk-in-Closet
- Second Floor Laundry Room



CHESTER
 MAIN FLOOR AREA: 692 SQ. FT.
 2ND FLOOR AREA: 692 SQ. FT.
 TOTAL FLOOR AREA: 1384 SQ. FT.



BASEMENT DEVELOPMENT PLAN
 DEVELOPMENT FLOOR AREA: 440 SQ. FT.

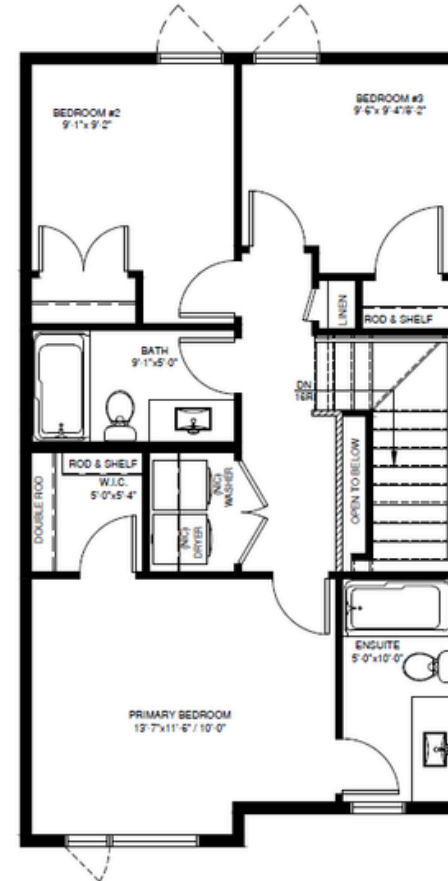
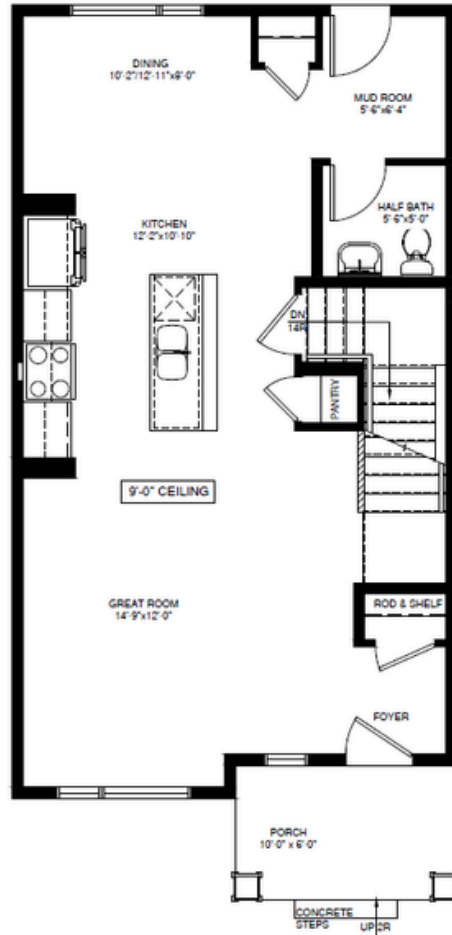
Disclaimer:
 The above drawing is a graphical representation of the unit to be built. Site conditions may dictate changes or substitutions that have to be made and are not reflected on these drawings. Pacesetter Homes reserves the right to make such changes or substitutions as they see fit. Do not scale drawings; confirm dimensions on site.

CHESTER: 1384 sq. ft.
 UNITS: 11, 27, 43, 59, 75

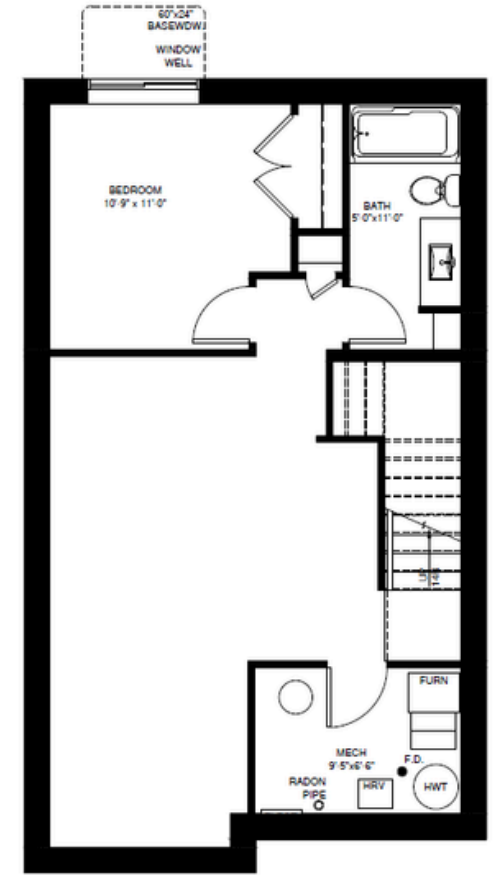
THE GAIT-CHESTER

Home Features:

- Town Home
- Open Concept Layout
- Galley Kitchen
- 9' ceilings on main floor for an open, airy feel
- Front & side landscaping
- Primary Bedroom with Private Ensuite and Walk-in-Closet
- Second Floor Laundry Room



CHESTER
 MAIN FLOOR AREA: 692 SQ. FT.
 2ND FLOOR AREA: 692 SQ. FT.
 TOTAL FLOOR AREA: 1384 SQ. FT.



BASEMENT DEVELOPMENT PLAN
 DEVELOPMENT FLOOR AREA: 440 SQ. FT.

CHESTER: 1384 sq. ft.
 UNITS: 7, 23, 39, 55, 71

Disclaimer:
 The above drawing is a graphical representation of the unit to be built. Site conditions may dictate changes or substitutions that have to be made and are not reflected on these drawings. Pacesetter Homes reserves the right to make such changes or substitutions as they see fit. Do not scale drawings; confirm dimensions on site.