



**PACESETTER  
HOMES**  
A QUALICO<sup>®</sup> Company

# AUSTIN

---

- **Bedroom: 3**
  - **Bathroom: 2.5**
- 

**Main Floor: 700 SQ.FT.**

**Upper Floor: 700 SQ.FT.**

**Total: 1400 SQ.FT.**

---



Elevation C1 - Concept Only

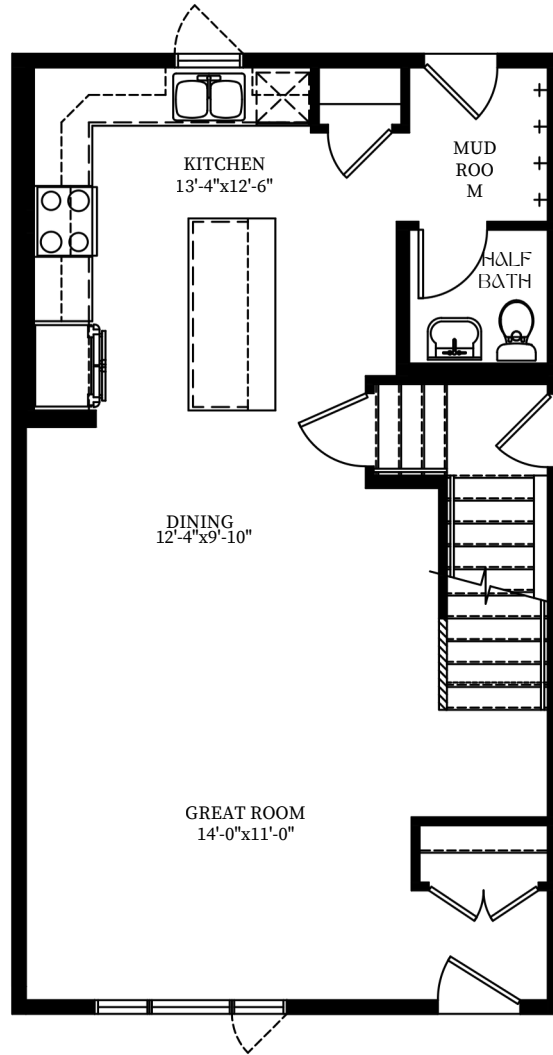
# AUSTIN

## Home Features:

- Townhome
- Open Concept Layout
- L-Shaped Kitchen with Central Island
- Mudroom and Half Bathroom at Back Entrance
- Primary Bedroom with Private Ensuite and Walk-in-Closet
- Second Floor Laundry Room
- 8' Ceilings

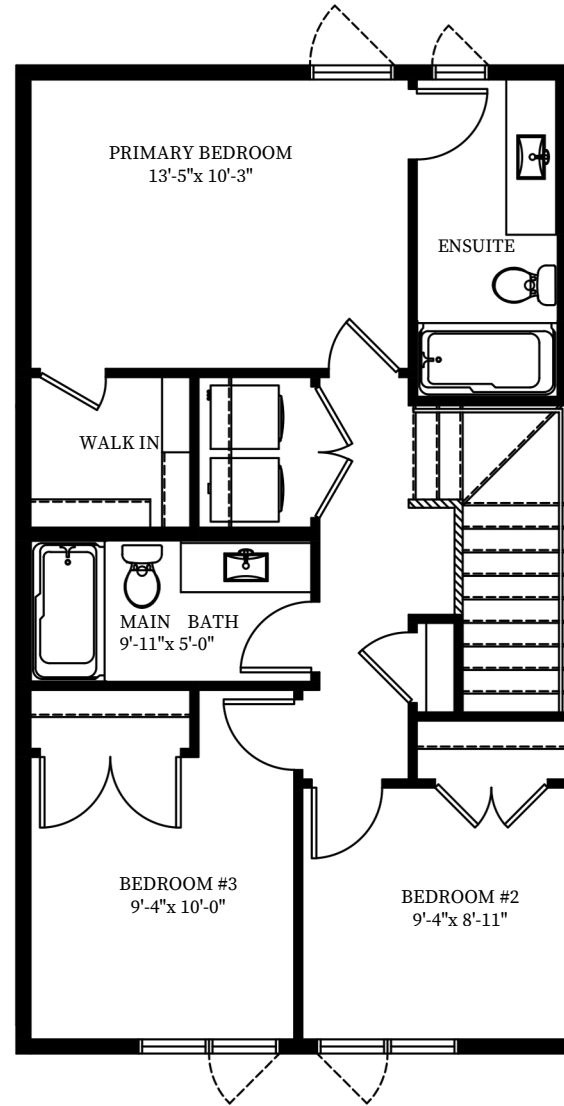
**Disclaimer:**

The above drawing is a graphical representation of the unit to be built. Site conditions may dictate changes or substitutions that have to be made and are not reflected on these drawings. Pacesetter Homes reserves the right to make such changes or substitutions as they see fit. Do not scale drawings; confirm dimensions on site.



### Main Floor Plan

Size: 700 SQ.FT.



### Second Floor Plan

Size: 700 SQ.FT.

## Optional Basement Plan

