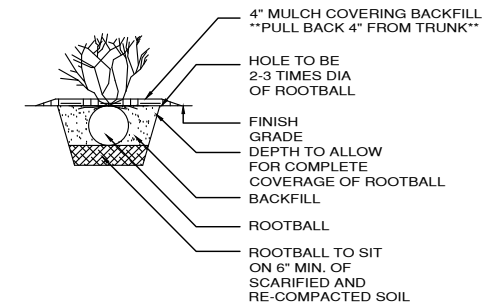
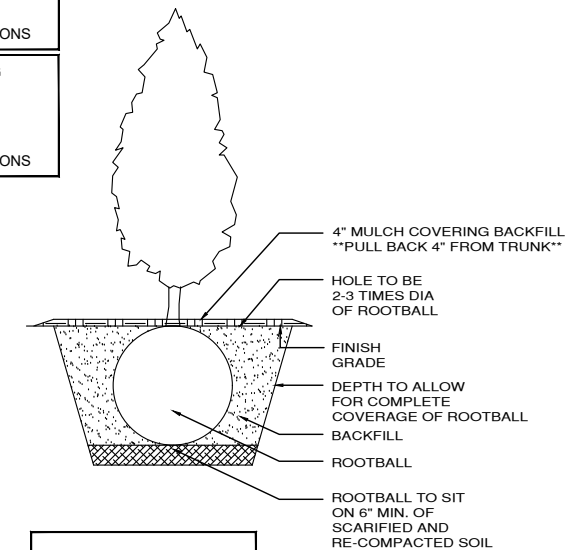


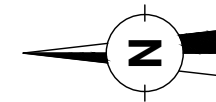
- MALUS "FLOWERING CRAB GLADIATOR ROSYBLOOM TREE"
 - SPIRAEA BETULIFOLIA "TOR BIRCH LEAF"
 - SPIRAEA JAPONICA "LITTLE PRINCESS" PINK
 - POTENTILLA FRUTICOSA "DAKOTA SUNSPOT"
- SOD TO BE INSTALLED IN ACCORDANCE WITH SECTION 02496 CITY OF REGINA REGULATIONS
 - WOOD MULCH/TOPPING MIN. 4" TO BE OF CONTENT IN ACCORDANCE WITH SECTION 02496 CITY OF REGINA REGULATIONS
 - ROCK COVER/TOPPING MIN. 4" TO BE OF CONTENT IN ACCORDANCE WITH SECTION 02496 CITY OF REGINA REGULATIONS



POTENTILLA, SPIRAEA, HONEYSUCKLE SHRUB TYPICAL



MALUS "FLOWERING CRAB GLADIATOR ROSYBLOOM TREE, AND GOLDSBUR AMUR CHERRY



LANDSCAPING PLAN

ADDRESS: **1765-1775 RED SPRING STREET**

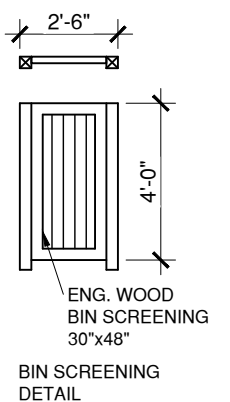
PLAN: **102224393**

BLOCK: **1**

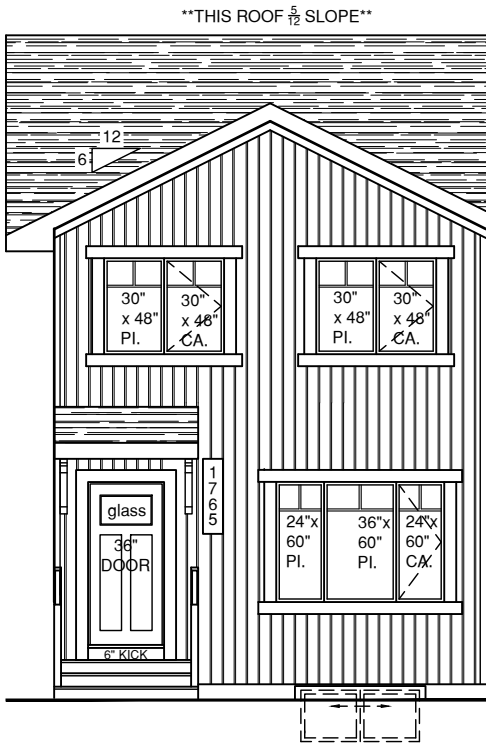
LOT: **35B-32B**

SUBDIVISION: **WESTERRA, PHASE 1**

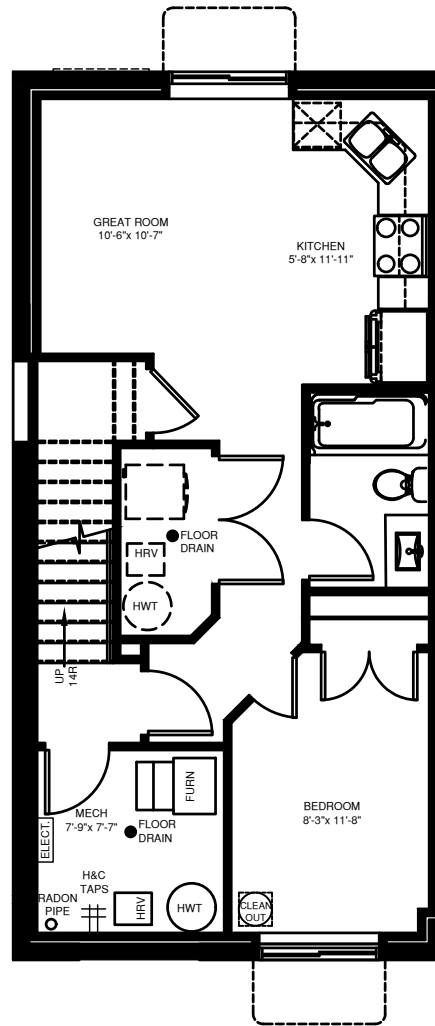
LOCATION: **REGINA, SASKATCHEWAN**



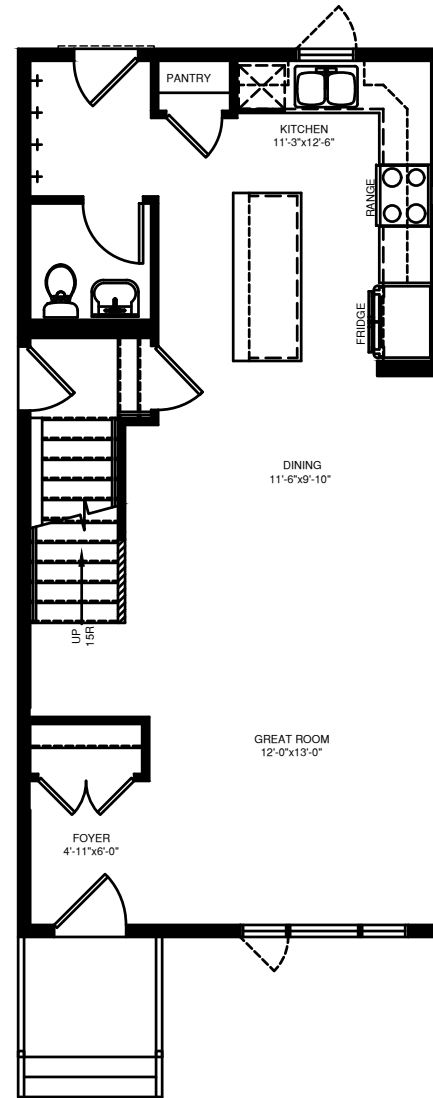
APPROVAL: PACESETTER HOMES REPRESENTATIVE: _____ DATE _____ CUSTOMER(S): _____ DATE _____	Disclaimer: The above drawing is a graphical representation of the unit to be built. Site conditions may dictate changes or substitutions that have to be made and are not reflected on these drawings. Pacesetter Homes reserves the right to make such changes or substitutions as they see fit. Do not scale drawings; confirm dimensions on site.	TOWNHOUSE MODELS BENNETT / BENNETT 2 BUILDING SPEC 2025 SPEC	ADDRESS 1765 - 1775 RED SPRING STREET WESTERRA, PHASE 1, REGINA SK. CUSTOMER - SCALE NOT TO SCALE	TOTAL AREA 5248 SQ. FT. DRAWING NUMBER A1-2 DRAWING NAME LANDSCAPING SITE PLAN	TOWNHOUSE PLAN WESTERRA 4 PLEX DRAWN BY CK	<p>OFFICE: 810-C McDonald St. Regina, Sask. S4N 2X6 Ph. (306) 565-4663 Fx. (306) 565-4687 WEB: PacesetterHomesSask.com</p>
--	---	---	---	--	---	---



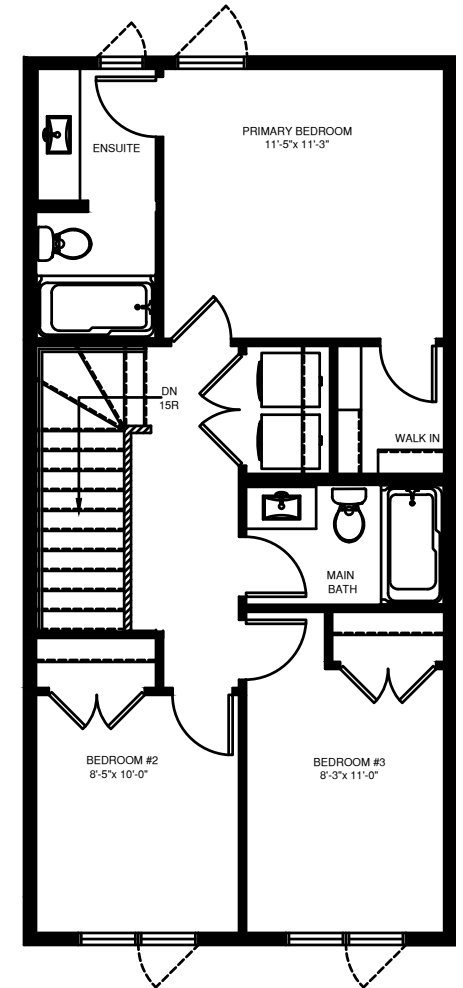
1765 RED
 SPRING ST.
 BENNETT 2
 1328 SQ.FT.



OPTIONAL
 BASEMENT SUITE



MAIN FLOOR



SECOND FLOOR

Disclaimer:

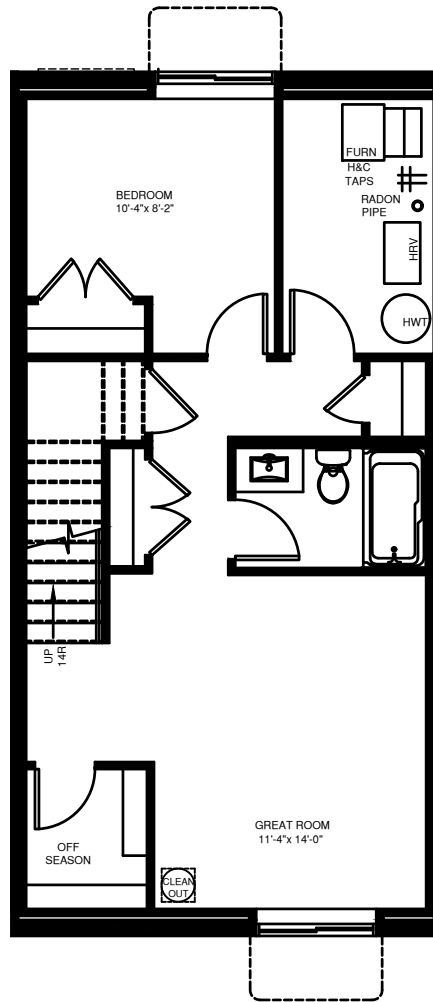
The above drawing is a graphical representation of the unit to be built. Site conditions may dictate changes or substitutions that have to be made and are not reflected on these drawings. Pacesetter Homes reserves the right to make such changes or substitutions as they see fit. Do not scale drawings; confirm dimensions on site.



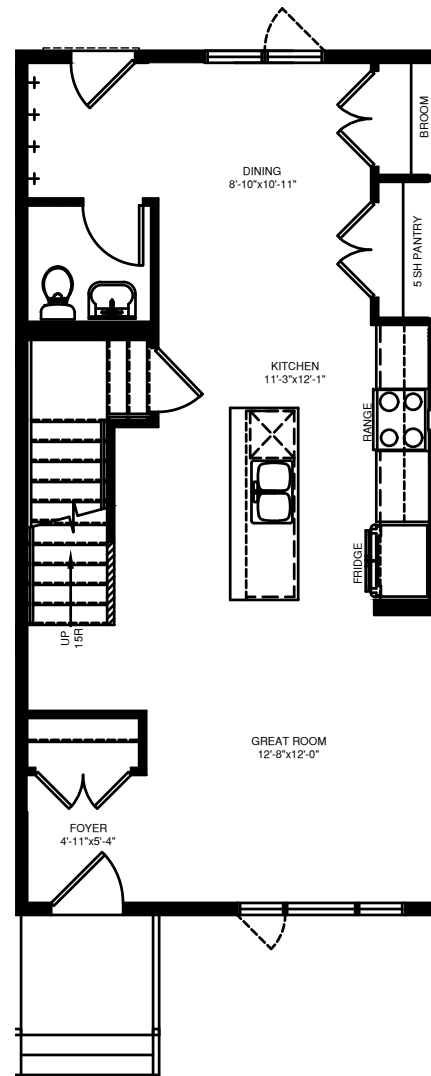
OFFICE:
 810-C McDonald St.
 Regina, Sask.
 S4N 2X6
 Ph. (306) 565-4663
 Fx. (306) 565-4687
WEB:
 PacesetterHomesSask.com



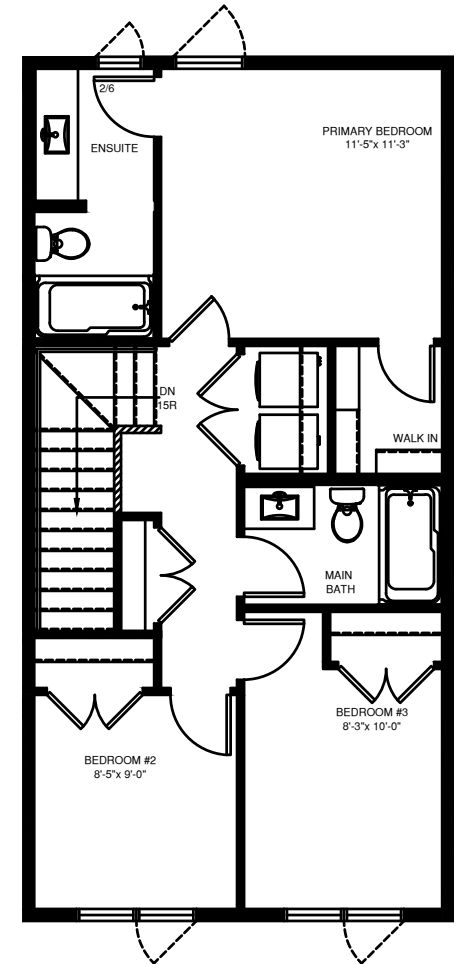
1769 RED
 SPRING ST.
 BENNETT
 1296 SQ. FT.



OPTIONAL
 BASEMENT



MAIN FLOOR



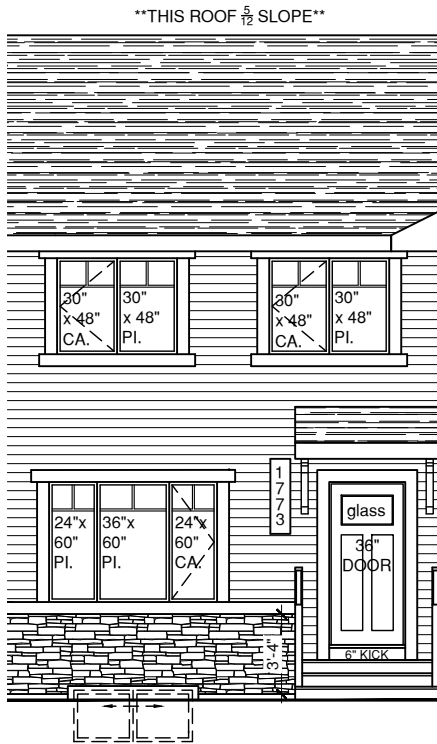
SECOND FLOOR

Disclaimer:

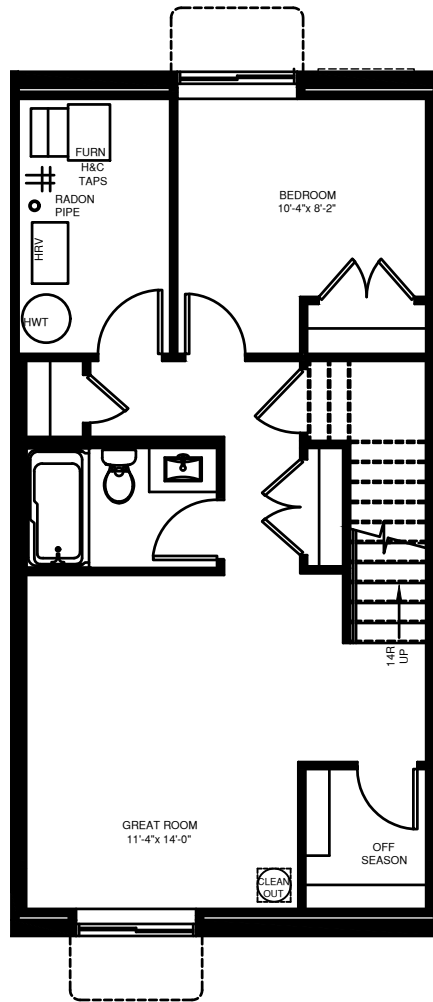
The above drawing is a graphical representation of the unit to be built. Site conditions may dictate changes or substitutions that have to be made and are not reflected on these drawings. Pacesetter Homes reserves the right to make such changes or substitutions as they see fit. Do not scale drawings; confirm dimensions on site.



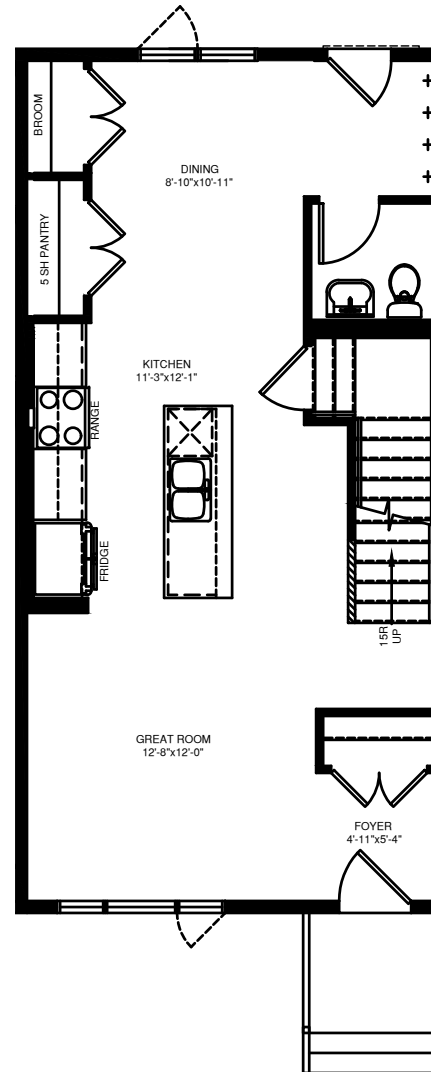
OFFICE:
 810-C McDonald St.
 Regina, Sask.
 S4N 2X6
 Ph. (306) 565-4663
 Fx. (306) 565-4687
WEB:
 PacesetterHomesSask.com



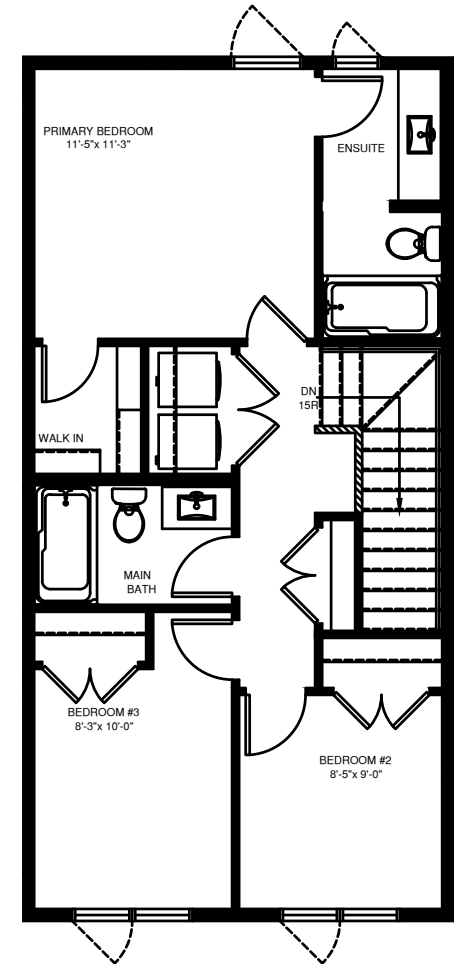
1773 RED
 SPRING ST.
 BENNETT
 1296 SQ. FT.



OPTIONAL
 BASEMENT



MAIN FLOOR



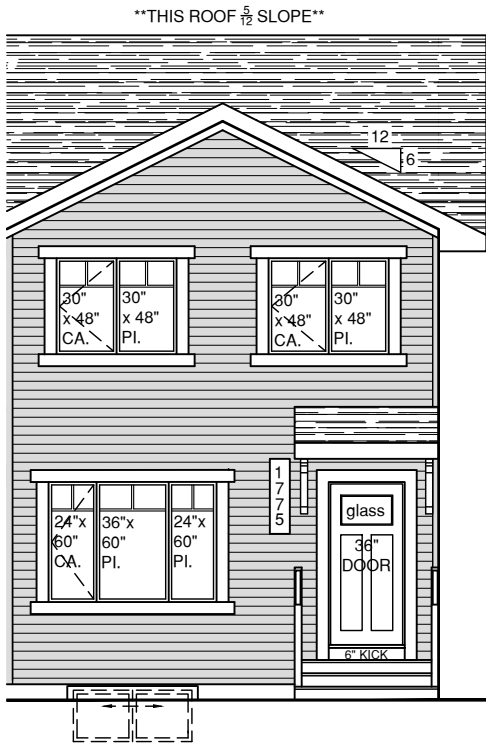
SECOND FLOOR

Disclaimer:

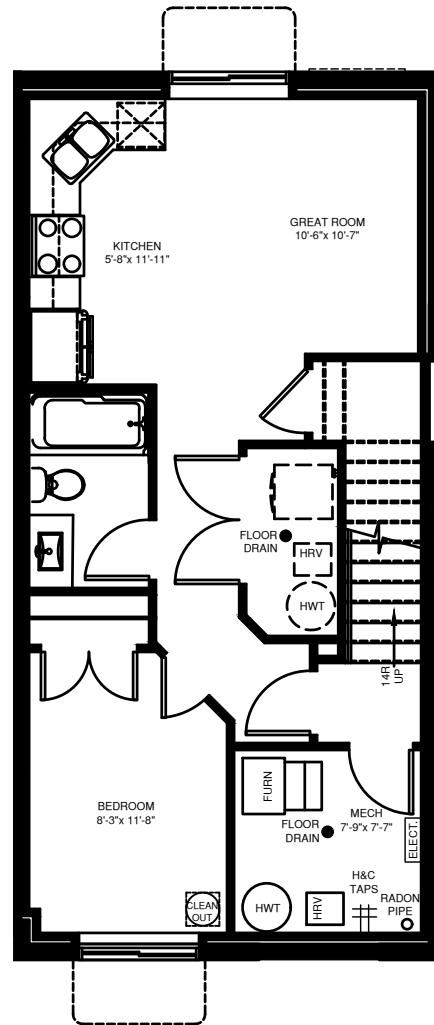
The above drawing is a graphical representation of the unit to be built. Site conditions may dictate changes or substitutions that have to be made and are not reflected on these drawings. Pacesetter Homes reserves the right to make such changes or substitutions as they see fit. Do not scale drawings; confirm dimensions on site.



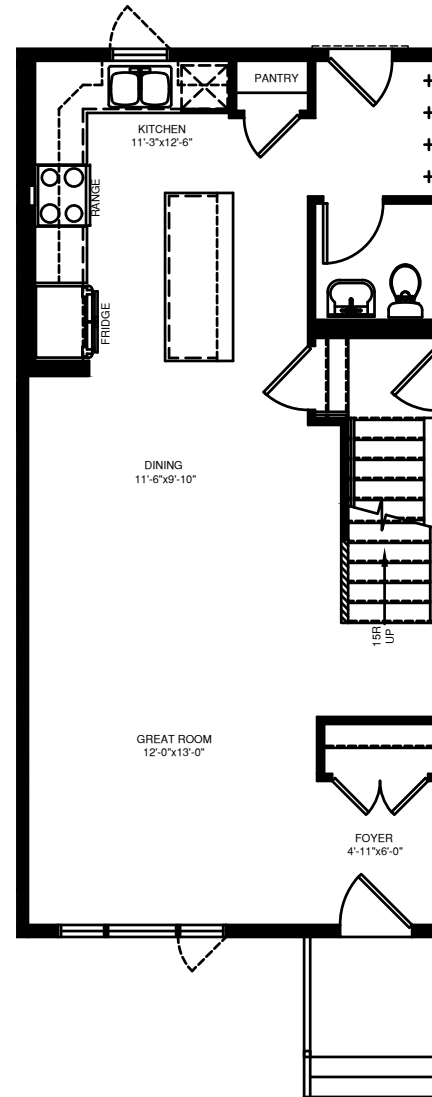
OFFICE:
 810-C McDonald St.
 Regina, Sask.
 S4N 2X6
 Ph. (306) 565-4663
 Fx. (306) 565-4687
WEB:
 PacesetterHomesSask.com



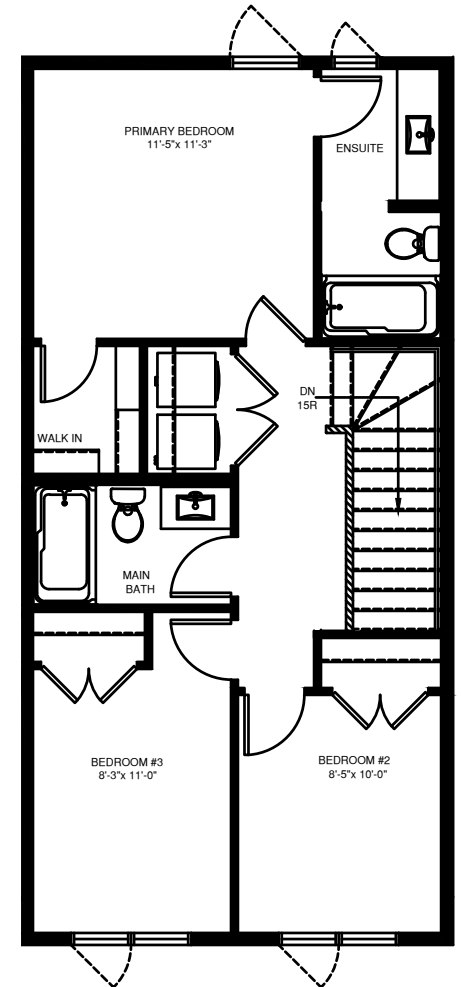
1775 RED
 SPRING ST.
 BENNETT 2
 1328 SQ. FT.



OPTIONAL
 BASEMENT SUITE



MAIN FLOOR



SECOND FLOOR

Disclaimer:

The above drawing is a graphical representation of the unit to be built. Site conditions may dictate changes or substitutions that have to be made and are not reflected on these drawings. Pacesetter Homes reserves the right to make such changes or substitutions as they see fit. Do not scale drawings; confirm dimensions on site.



OFFICE:
 810-C McDonald St.
 Regina, Sask.
 S4N 2X6
 Ph. (306) 565-4663
 Fx. (306) 565-4687
 WEB:
 PacesetterHomesSask.com